

Rp	Nb	DESIGNATION		MATIERE/MATERIAL
01	1	CORPS	BODY	1.0625/A216WCC
03	1	JOINT RACCORD SIEGE	SEAT GASKET	GRAPHITE ou/ou PTFE
04	1	RACCORD SIEGE	SEAT	1.4404/AISI 316L
08	1	CLAPET	DISC	1.4404/AISI 316L
09	1	DEFLECTEUR	DISC-HOLDER	1.4404/AISI 316L
10	1	VIS D'ARRET	SCREW	INOX/STAINLESS STEEL
11	1	BILLE	BALL	1.4404/AISI 316L
12	1	TIGE	STEM	1.4404/AISI 316L
14	1	GUIDE TIGE	STEM GUIDE	1.4404/AISI 316L
15	1	BAGUE COUPELLE INF. (DN40/50)	RING (DN40/50)	1.0736/AISI 1215
16	1	COUPELLE INFERIEURE	UNDER SPRING PLATE	1.0736/AISI 1215
17	1	RESSORT	SPRING	1.4310/AISI 302 OU/OR INCONEL 600
18	1	COUPELLE SUPERIEURE	UPPER SPRING PLATE	1.0736/AISI 1215
22	1	VIS REGLAGE	ADJUSTMENT SCREW	1.0736/AISI 1215 (DN 40/50 : 1.4404/316L)
23	1	C/ECROU VIS REGLAGE	LOCK NUT	1.0060/A 288 gr C (DN 40/50 : 1.4404/316L)
26	1	JOINT DE BOUCHON	PLUG GASKET	GRAPHITE ou/ou PTFE
27	1	BOUCHON DN 8 à 32 DN 40/50	PLUG ND 8 to 32 ND 40/50	1.0625/A216WCC 1.0060/A 288 gr C
55	1	VIS DE BLOCAGE	BLOCKING SCREW	INOX / STAINLESS STEEL
56	1	ECROU	NUT	INOX / STAINLESS STEEL
62	1	JOINT	GASKET	1.4301/ AISI 304L
63	1	VIS	SCREW	INOX / STAINLESS STEEL

- SOUPAPE DE SURETE ACIER CARBONE
- BOUCHON ETANCHE SANS LEVIER
- RACCORDEMENT :
ENTREE=FILETEE GAZ CYLINDRIQUE OU NPT
SORTIE=TARAUEE GAZ OU NPT
BP=BASSE PRESSION-PN40
MP=MOYENNE PRESSION-PN100

-AUTRES CONDITIONS DE SERVICE, RACCORDEMENTS
ET MATERIAUX SUR DEMANDE.
-MATERIEL CONFORME A UX DIRECTIVES 97/23/CE
& ATEX 94/9/CE

- CARBON STEEL SAFETY RELIEF VALVE
- TIGHT PLUG WITHOUT LEVER
- CONNECTIONS :
INLET=THREADED CYLINDRICAL BSP OR NPT
OUTLET= SCREWED END BSP OR NPT
BP=LOW PRESSURE-PN40
MP=MEDIUM PRESSURE-PN100

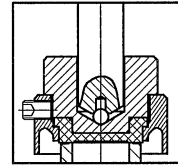
-OTHER WORKING CONDITIONS, CONNECTIONS AND
MATERIALS ON REQUEST
-MATERIAL CONFORM TO DIRECTIVE S 97/23/EC
& ATEX 94/9/EC

RACCORDEMENT CONNECTION				A	B	C	P.D.O (bar) SET PRESSURE MINI 0,20 bar		SECTION DE PASSAGE CROSS SECTION (mm2)		MASSE WEIGHT (Kg)
DN	ENTREE INLET GAZ ou NPT	SORTIE OUTLET GAZ NPT					Maxi	BP	MP	BP	
08	1/4"	3/4"	3/4"	38	61	215	40	80	50	50	1,8
10	3/8"	3/4"	3/4"	38	61	215	40	80	79	50	1,8
15	1/2"	1/2"	1/2"	38	61	215	40	80	79	50	1,8
15	1/2"	3/4"	3/4"	38	61	215	40	80	113	50	1,8
15	1/2"	1"	1"	43	67	255	40	80	113	113	3
15	1/2"	1.1/4"	1"	43	67	255	40	80	113	113	3
20	3/4"	1"	1"	43	67	255	40	80	177	177	3
20	3/4"	1.1/4"	1.1/4"	43	67	255	40	80	177	177	3
25	1"	1"	1"	43	67	255	40	80	177	177	3
25	1"	1.1/4"	1.1/4"	43	67	255	40	80	254	254	3
32	1.1/4"	1.1/4"	1.1/4"	43	67	255	40	60	346	346	3
40	1.1/2"	2"	2"	80	100	470	34	60	707	452	11
50	2"	2"	2"	80	100	470	30	60	804	452	12

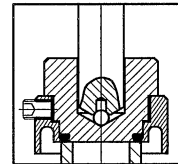
VARIANTES OTHER POSSIBILITIES

CLAPET A PORTEE PTFE
DISC WITH PTFE GASKET

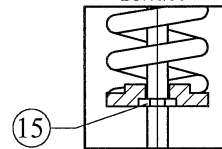
(P>20 bar, nous consulter)



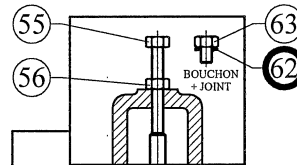
CLAPET A JOINT TORIQUE FPM
ou EPDM or NBR ou FFKM
DISC WITH O-RING FPM or EPDM or NBR or FFKM



COUPELLE
UNDER SPRING PLATE DETAIL
DN40/50



VIS DE BLOCAGE
BLOCKING SCREW

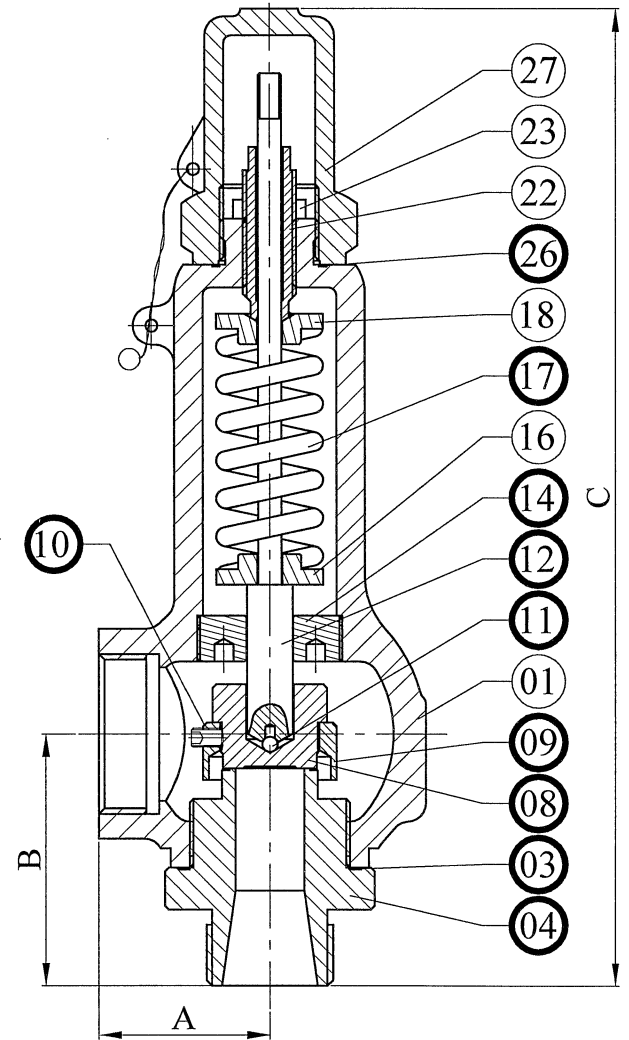


ATTENTION!

VIS DE BLOCAGE MECANISME - A REMPLACER PAR BOUCHON + JOINT AVANT MISE EN SERVICE
BLOCKING SCREW SHOULD BE REPLACED BY SCREW+GASKET BEFORE USE

PIECES DE RECHANGE CONSEILLEES
RECOMMENDED SPARE PARTS

CE DOCUMENT PEUT ETRE MODIFIE SANS AVIS PREALABLE
ALL SPECIFICATIONS SUBJECT TO CHANGE WITHOUT NOTICE



H	28/01/15	MISE A JOUR / UP DATING	
		SOUPAPE DE SURETE	
		DN 08/ .../50 - GAZ/BSP-NPT - PN 40/100	

